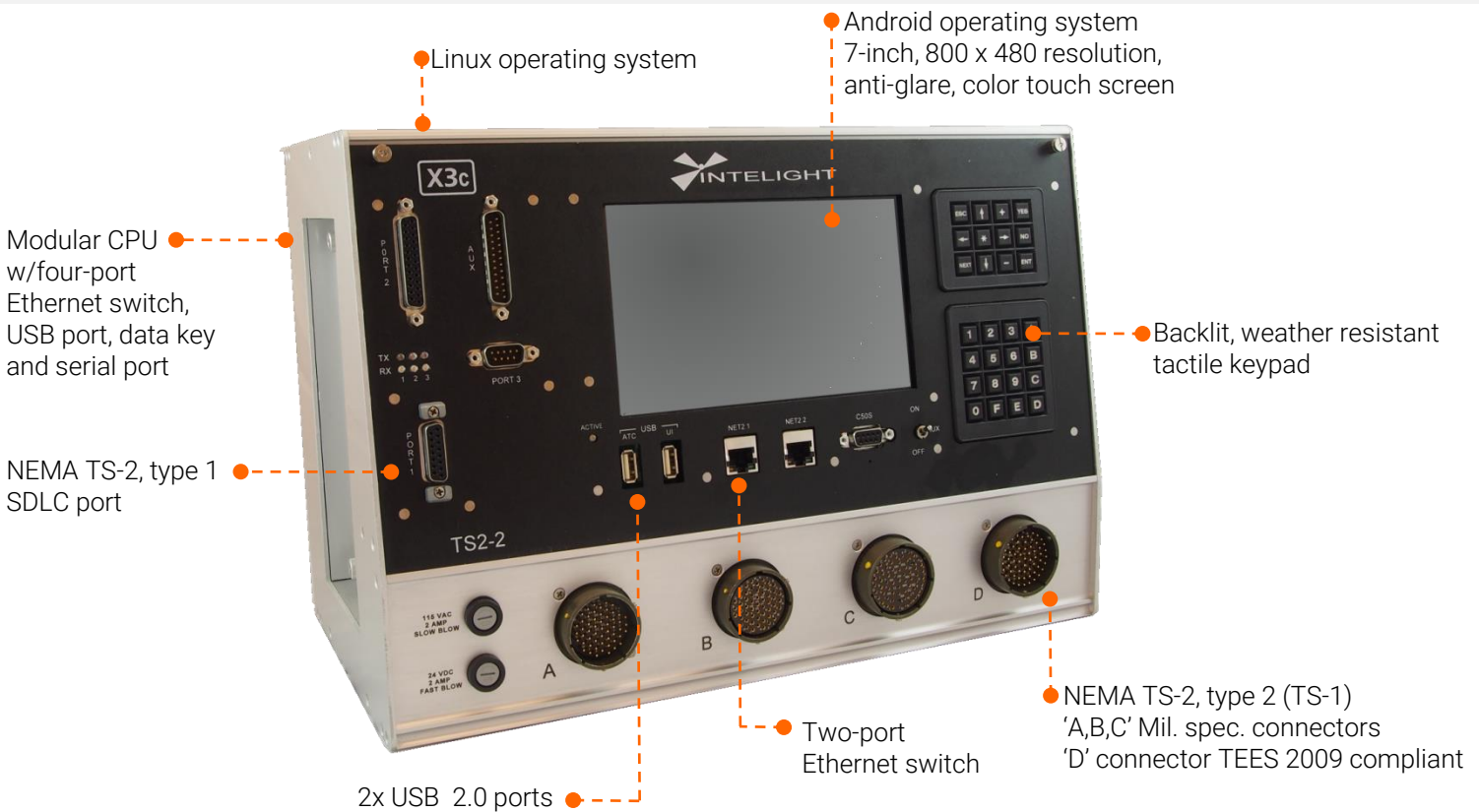


Overview

The X-3C controller is part of Intelight's award winning X-Series NEMA controller line. The X-3C meets and exceeds the current ATC, NEMA and NTCIP standards providing agencies with a robust, industry-leading, true open architecture hardware platform. Use the X-3C to manage Ethernet traffic, monitor CCTV or detection camera video, enter cabinet and maintenance logs directly into the controller (syncs with central), and integrate with other products via android applications, all while running traffic signal operations. The X3C includes a large backlit 1280 x 720 resolution, anti-glare, color touch screen used for advanced signal timing analytics and software status/configuration when used in conjunction with MaxTime 2.0.

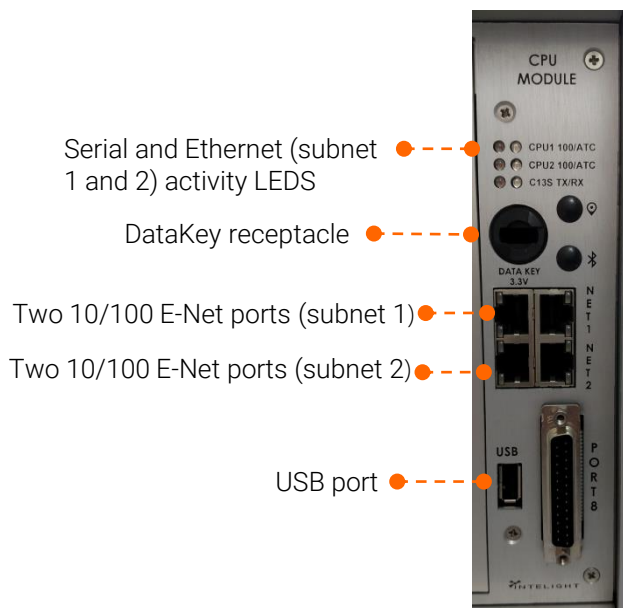


Highlights

- Compliant with NEMA TS-2 and ATC 5201 and 5401 standards
- Linux operating system
- Two independent 10/100 Mbit network cards
- TS-1 and/or TS-2 operation (requires type 2)
- Supports serial and/or Ethernet communications
- 2070 hardware expansion bay for device integration
- MaxTime local controller software
- 40 phases, 16 rings, 32 overlaps, 16 preempts
- Monitor and configure timings wirelessly from a laptop, tablet or smartphone without database editor or third-party software
- Built-in master/closed loop functionality
- Peer-to-peer communications
- Advanced TSP included

Modern platform

- Supported standard specifications:
 - ATC 5201 (v6.24)
 - ATC 5401 (v2.17) API (FIO & FP interface)
 - NEMA TS2 with NTCIP (type 1 & type 2)
 - NTCIP – 1202 ASC, 1201, and base standards
 - NTCIP – 1210 master control
- Open architecture
 - Linux 3.2 operating system
- Faster processing and more controller memory
 - Motorola PowerPC 8248 32-bit (750 MIPS at 400 MHz) processor
 - (64MB flash/64MB DRAM)
- Two independent network adapters
 - 2 10/100 Mbit ports on controller front panel (subnet 2)
 - 4 10/100 Mbit ports on CPU module (see figure below)
- Two-port USB hub (front panel) + CPU USB
- Six config. serial ports (5 are SDLC capable)
- ATC/2070 comm./modem slot
 - Optional 2070-6A/B, 2070-7A/B modules
 - Optional 2070-7T w/GPS time clock module

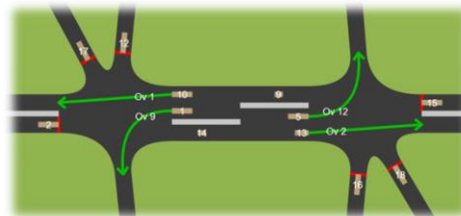


Robust hardware

- Built with current, industry standard technology
- Compliant with NEMA environmental requirements
 - Temp range: -40°C to +80°C
 - TS-2 type 1 size: 8 ½"H x 8 ½"D x 14 ¾"L
 - TS-2 type 2 size: 10 ¾"H x 8 ½"D x 14 ¾"L
 - Two-port 10/100 Mbit Ethernet ports
 - Variable power supply (95-250 VAC 50/60 Hz auto sensing)

Features and usability

- On-board web server - Monitor and manage traffic signal without the need for additional software



Sample MaxTime status display as viewed from front panel, tablet or smartphone (no app required)

- Eight programmable special function key sequences provide shortcuts to software menus
- Android color touch screen/user interface
 - 7-Inch touch screen
 - 800 x 480 resolution
 - Fully functional Android 6.0 interface with third party application support
- USB support
 - Install/update traffic signal software
 - Transfer timing databases via flash drive
 - Configure and monitor timings via Wi-Fi adapter from computer, tablet or smartphone without additional software or database editor
- Live software update
 - Schedule software updates
 - Download update package remotely
 - Perform firmware and operating system updates without placing controller in flash

Distributed by TRAFFIC CONTROL PRODUCTS

Phone 440-951-8929
Fax 440-951-8203

sales@traffcon.com
www.traffcon.com
4565 Glenbrook Rd Willoughby, OH 44094

