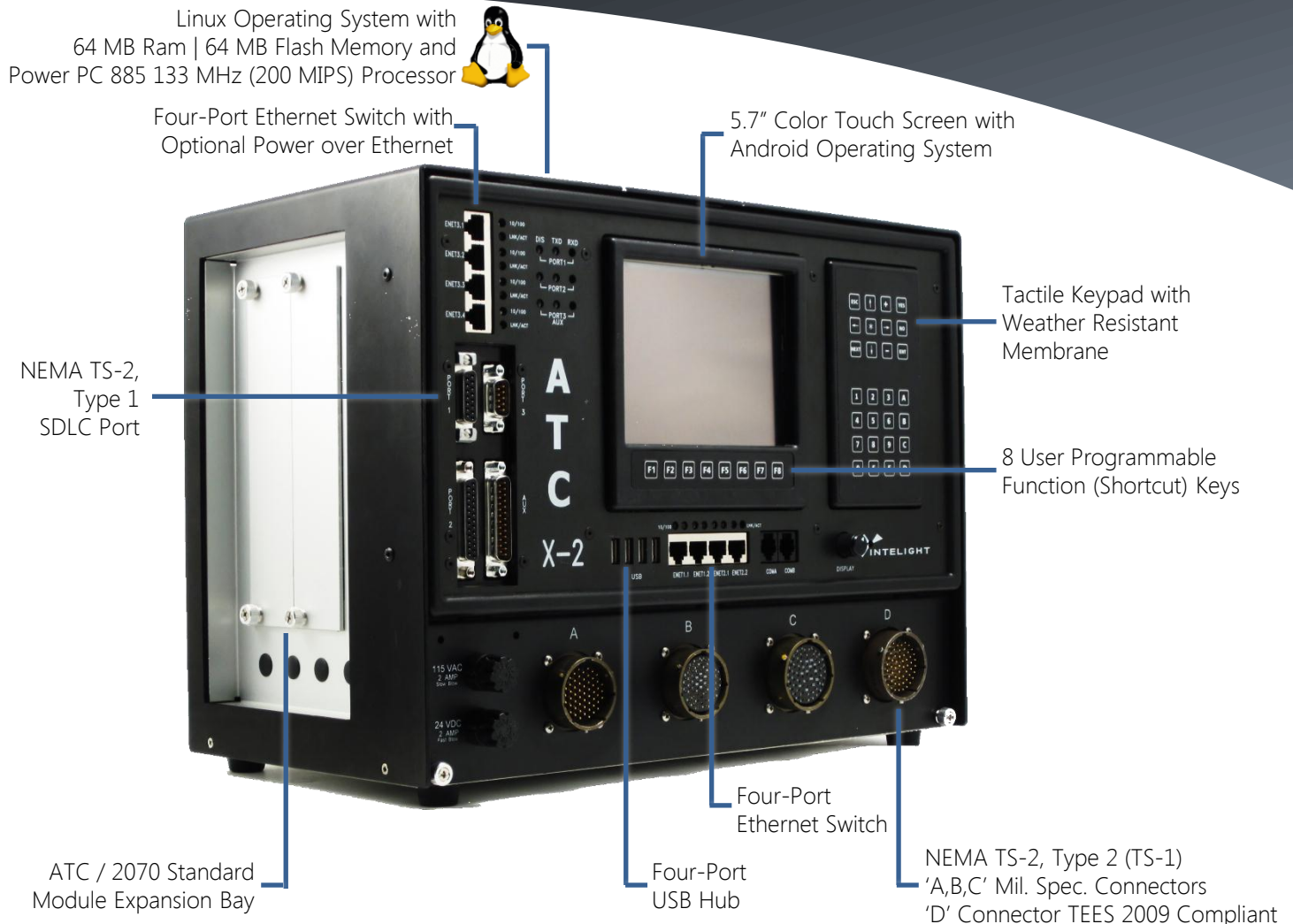


NEMA TS-2 Type 1 & 2 Traffic Signal Controller

Advanced Transportation Controller (ATC)



OVERVIEW

The X-2 Controller is part of Intelight's award winning "X-Series" NEMA Controller Line. The X-2 meets and exceeds the current ATC, NEMA, and NTCIP standards providing agencies with a robust, industry leading, true open architecture hardware platform. The X-2 can help agencies organize and improve operations and reduce the amount of equipment in the signal cabinet. Use the X-2 to manage Ethernet traffic, monitor CCTV or Detection camera video, enter cabinet and maintenance logs directly into the controller (syncs with Central), and integrate with other products via android applications, all while running traffic signal operations. Contact Intelight today to see how the X-2 Controller can help update your signal operations system to 21st century technology.

HIGHLIGHTS

- Compliant with NEMA TS-2 and ATC 5.2b Standards
- Linux Operating System
- Color Touch Screen with Android Operating System
- Two Independent 10/100 Mbit Network Cards
- TS-1 and/or TS-2 Operation
- Supports Serial and/or Ethernet Communications
- 2070 Hardware Expansion Bay for Device Integration
- MaxTime Local Controller Software
 - 40 Phases, 16 Rings, 32 Overlaps, 16 Preempts
 - Monitor and configure timings wirelessly from a laptop, tablet, or smart-phone without database editor or 3rd party software
- Built-In Master/Closed Loop Functionality
- Peer to Peer communications
- Locally Adaptive Transit Prioritor
- Supports TS-1, TS-2, 170, ITS Style Cabinets

MODERN PLATFORM

- Supported Standard Specifications:
 - ATC v5.2b and Proposed 6.0
 - API (FIO & FP Interface)
 - NEMA TS2 with NTCIP (Type 1 & Type 2)
 - NTCIP – 1202 ASC, 1201, and Base Stds.
- Open Architecture
 - Linux Operating System
 - Google Android™ O/S (Front Panel)
- Faster processing and more controller memory
 - Power PC 885 133 MHz (200 MIPS) Processor
 - (64MB Flash / 64MB DRAM)
- Two Independent Network Cards
 - Four 10/100 Mbit Ethernet Ports
 - Four 10/100 Mbit Ethernet Ports w/POE*
- Four-Port USB Hub
- Seven Config. Serial Ports (5 are SDLC Capable)
- Two ATC/2070 Comm./Modem Slots
 - 2070-6A/B, 2070-7A/B Modules
 - 2070-7T w/GPS Time Clock Module
- On-Board Video Support
 - Remote display of IP-based video streams
 - H.264 Digital Video Encoding* (In Development)



Android Front Panel: MaxTime Main Menu

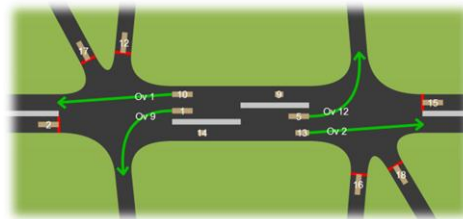
* Indicates Extended/Optional Feature

ROBUST HARDWARE

- Built with current, industry standard technology
- Compliant with NEMA Environmental Requirements
 - Temp Range: -40°C to +80°C
 - Size: 143/4 W x 73/4 D x 101/2 H (mm/in)
 - Two-port 10/100 Mbit Ethernet ports
 - Tactile keypads
 - Variable Power Supply (95-250 VAC 50/60 Hz auto sensing)

FEATURES & USABILITY

- On Board Web-Server - Monitor and manage traffic signal without the need for additional software



Sample MaxTime Status Display as Viewed from Front Panel, Tablet or Smart-Phone (No App Required)

- Front Panel Color Video Screen
 - Configure and Monitor Signal in Rich UI
 - 5.7" Touch Screen, 640 x 480 Res.
 - Supports Android Applications
- Eight Programmable "Special Function Keys" provide shortcuts to software menus
- USB Support
 - Install traffic signal software from flash drive
 - Transfer timing databases via flash drive
 - Configure and monitor timings via Wi-Fi adapter from computer, tablet, or smart phone without additional software or database editor
- Dynamic Serial Ports
 - Accommodates integration such as audible push buttons, detection, or ped. countdown heads



Android Front Panel: Phase Options Menu

Distributed by:

